

CCBC Drive for 2024



Focus Areas

- Marketing and Networking
- Source of Information & Support
- Making a Difference





NISSAN



WELCOME

Access to market as key driver of
success



Kgalaletso Tlhoaele

Head:
Enterprise Development, Relationship Banking
Absa



Support available to Industrialists

Moeketsi Marumo

Head:
Enterprise Development, Relationship Banking
Absa

Closing



Stanley Godi

Regional Segment Head:
Relationship Banking
Absa

CCBC Wonderboom Business Breakfast

Scaling your business – the intelligent choice...

Presented by PwC Private - a dedicated practice for private companies

- Understanding risks and challenges pertinent to small and medium businesses
- Excel to the next level
- The Agenda of the Owner.



Jayshila Mistri
PwC: Lead partner,
Lead director for
Corporate Governance
& chairs the PwC
Social and Ethics committee



Bernice de Wiff
PwC: Associate Director,
Accredited trusted
business advisor, &
Family business consultant



Date: Friday 8 September 2023

Time: Registration - 08:00
Opening - 08:30

Venue: Wonderboom Airport

RSVP: R80 for members
R100 for non-members



About Absa and our values


Absa Bank, a wholly owned subsidiary of the Absa Group, offers a range of retail, business, wealth management, corporate and investment solutions to customers and clients across South Africa. Our ambition is to sustainably create shared value and play an integral role in our customers' and clients' life journey, empowering them to achieve more and to recommend us to family, friends and business associates.

Absa is a truly African brand, inspired by the people we serve and determined to be always brave, passionate and ready so that we can make Africa proud.

Absa Group Limited is listed on the JSE and is one of Africa's largest diversified financial services groups with a presence in 15 countries across the African continent, as well as offices in the United Kingdom and the United States.

Listing Details

Category	Finance > Banking Finance > Debt Collection Finance Finance > Financial Solutions Insurance > Financial Solutions Finance > Financing Insurance Finance > Investments Insurance > Investments
Keywords	Corporate and Investment Banking, Business Banking Solutions
Address	Hillcrest Office Park, Lourie Place, 177 Dyer Road, Hillcrest, 0083, Pretoria, South Africa, 0083
Suburbs	Hillcrest
Telephone	012 364 1000
E-mail	actionline@absa.co.za
Unique Pageviews	11,253
Website Link	www.absa.co.za
Social Media Link	www.facebook.com/AbsaSouthAfrica/



Scope of Manufacturing in Tshwane

- 40+ Industrial Areas/Parks (Seven Regions)
- Most dynamic manufacture Regions:

Region 1

(**Rosslyn**; Ga-Rankuwa; Klerksoord; Babelegi)

Region 3

(Pretoria West Industrial – **Coca Cola**)

Region 4

(Sunderland R; Hennopspark; Samrand; Gateway; Route 21; Louwlandia; Centurion Aero Space; Highway)

Region 6

(**Silverton / Waltloo** / Auto SEZ / N4 Gateway)

A photograph of a worker in a green shirt and safety mask working on a large wooden structure in a factory. The worker is using a tool to work on the wood. The background shows a large industrial space with many fluorescent lights on the ceiling.

MADE IN TSHWANE

- Create a manufacturing eco-system with a comprehensive understanding of:
 - What is manufactured and by whom?
 - What is sourced/imported and where from?
 - What gets exported and where to?
 - Complimentary services needed?
- Identify opportunities for localisation and new clusters of manufacturing to be created
- Promote trade/export development.

Basic metals, fabricated metal products and machinery (35)

Company Name	Whats Being Produced	Whats Sourced/Imported
1. BRANRON PROJECTS AND PLANT HIRE	•Steal manufacturing Plant hire/ heavy equipment hire transport	• Steel from Pretoria west
2. Firefox (Pty) Ltd	•Braais and fireplaces.	• Steel from Gauteng & Centurion • Steel baskets from Cape Town
3. Foxtron Engineering	• Sheet metal/steel fabricator and product manufacturer. Laser cutting, Bending, Welding, Punching, Assembling	• Sheet Metal from Pretoria West, Benoni, Germiston, Edenvale & Centurion
4. Hazleton Pumps	•Design development and manufacturer of abrasive and corrosive slurry pump systems	• Square Tubing from Pretoria West, Benoni, Germiston, Edenvale & Centurion • Fasteners from Centurion • Surface Treatment from Pretoria West, Centurion
5.Diri Aluminium (Pty) Ltd	•Aluminium & Glass Windows, Facades, Doors etc. Manufacturers & Installers	• en8 Self Material from Pretoria • Steel from Pretoria

Chemicals; cosmetics; rubber and plastic products (33)

Company Name	What's Being Produced	What's Sourced/Imported
1. Amka Products	<ul style="list-style-type: none">• Fragrances; Personal Care; Hair Care; Cosmetics; Toiletries	<ul style="list-style-type: none">• Plant and Machinery from Silverton• Packaging, Plant and Machinery, chemicals from KZN and Europe, Asia
2. CW Pharmaceuticals	<ul style="list-style-type: none">• Cosmetic and Cosmeceuticals	
3. CHM Plastics	<ul style="list-style-type: none">• Rotomoulded Plastics Products - Injection Moulded Plastics Products - Sanitation	<ul style="list-style-type: none">• Mould In Graphics from US• Machinery from China• Raw Materials from UAE
4. Maxclean	<ul style="list-style-type: none">• Handwashing powder & Automatic Washing powder	<ul style="list-style-type: none">• Soda Ash from Alberton and Gauteng• Salt from Edenvale and Gauteng• Enzymes from Randburg and Gauteng

Rosslyn Improvement District



ROSSLYN
Improvement District



RID Office

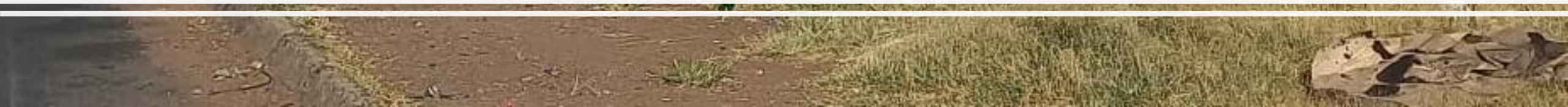
1. Environment & Beautification



ROSSLYN
Improvement District



Rosslyn Before





Levelling of middle road areas

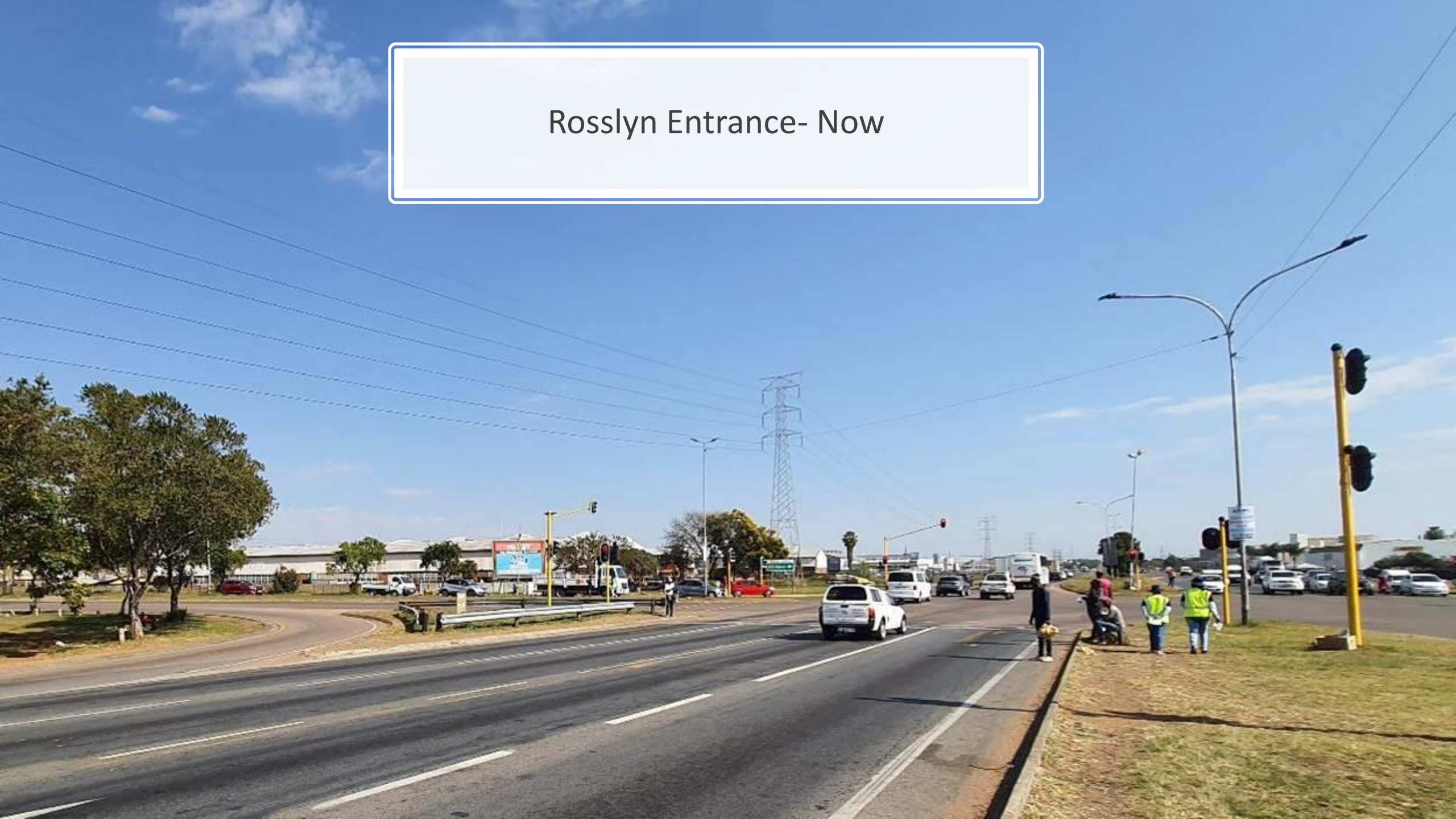


Painting of
Robot Poles

Replacing of Barriers



Rosslyn Entrance- Now



2. Roads

Infrastructure, Electricity & Water





Office of the City Manager

Block D | 2nd Floor | Tshwane House, | 320 Madiba Street | Pretoria | 0002
PO BOX 6338 | Pretoria | 0002
Tel: 012 358 4901 | Fax: 012 358 1112
Email: citymanager@tshwane.gov.za | www.tshwane.gov.za

My ref: SL/CM/11/23/484
Your ref:
Contact person: Seluleko Ngubane
Section/ Unit:

Tel: 012 358 7974
Fax:
Email: selulekon@tshwane.gov.za

09 November 2023

AUTHORISATION LETTER: ROSSLYN INDUSTRIAL DISTRICT

PER EMAIL: fanie@ccbc.co.za

Dear Mr Fanie, Du Plessis

Your offer to assist to fix the City's water leaks, pothole repairs and streetlight repairs from ROSSLYN INDUSTRIAL DISTRICT in Region 1 refers.

The City is currently facing challenges with providing certain services due to various challenges and your offer to support the City by repairing water leaks, pothole repairs and streetlight repairs is hereby acknowledged and appreciated.

I hereby grant permission to ROSSLYN INDUSTRIAL DISTRICT to conduct the above work and would like to bring to your attention the following:

- This permission is on the basis that you or your organisation fully indemnify the City against any risk or liabilities/lawsuits that may arise as a result of this authorisation.
- The services and materials used must comply with the relevant standards, to manage risks and liabilities to the City that may result from sub-standard materials and services.

Zero Pothole Campaign





Stability of Electricity Supply



3. Safety & Security



ROSSLYN
Improvement District

Security Blueprint

- Create an integrated security masterplan for Rosslyn
- Visible patrolling by 8 x TMPD motor bikes per day-shift
- CCTV cameras at 6 entrances into Rosslyn
- Camera network to link-up with business's security networks
- 24-hour monitoring and rapid response from Control Room
- Drone technology & Rapid response unit
- Protection of cables/infrastructure.

1.2 Daily Motorbike Patrolling





Prevention of Cable Theft



Office of the City Manager

Block D | 2nd Floor | Tshwane House, | 320 Madiba Street | Pretoria | 0002
PO BOX 6338 | Pretoria | 0002
Tel: 012 358 4901 | Fax: 012 358 1112
Email: citymanager@tshwane.gov.za | www.tshwane.gov.za

My ref: SL/CM/12/23/521
Your ref:
Contact person: Seluleko Ngubane
Section/ Unit

Tel: 012 358 7974
Fax:
Email: selulekon@tshwane.gov.za

05 December 2023

AUTHORISATION LETTER: Rosslyn Industrial District

PER EMAIL: fanie@ccbc.co.za

Dear Fanie Du Plessis

Your offer to assist the City with the installation of a security system at Platina 11kv and Rosslyn 132kv substations within the Rosslyn and Klerksdorp Industrial areas in Region 1 refers.

The City is currently facing challenges with providing certain services due to various challenges and your offer to support the City for protection of sub-stations, cable theft and vandalization of pylons by installing the security systems is hereby acknowledged and appreciated.

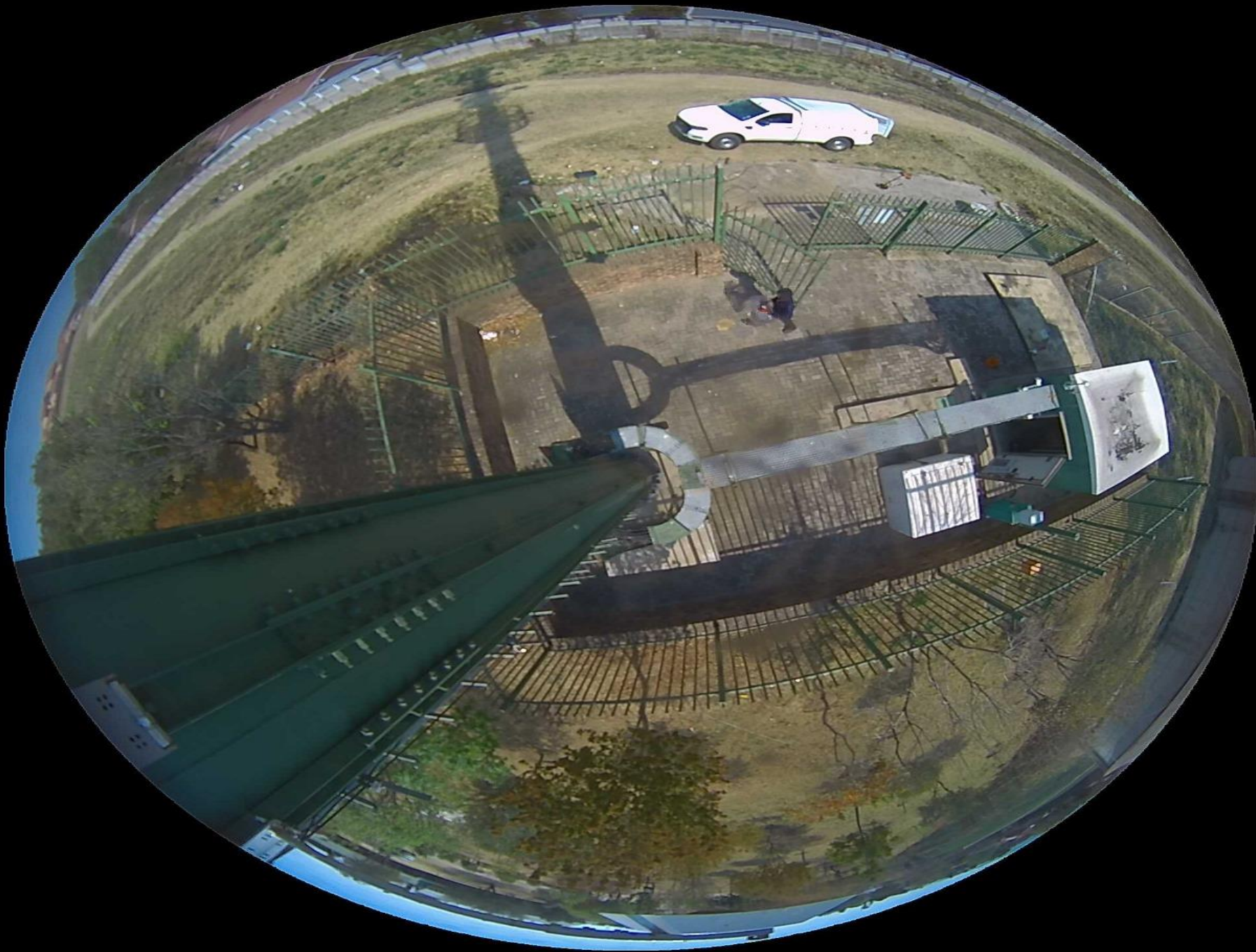
I hereby grant permission to Rosslyn Industrial District to conduct the above work and would like to bring to your attention the following:



1.3 RID Satellite Station

- ❖ 24-hour manned control room
- ❖ Emergency number:
012 111 8032
- ❖ Rapid response Unit
- ❖ Coordination from RID Station will reduce cost to businesses.





4. Community Engagement & Development



ROSSLYN
Improvement District

4. Community Engagement & Development

- Collaboration with CoGTA on Community engagement
- Agreement amongst Rosslyn businesses on combined CSI projects
- MoU with Community Representatives
- Community portal.



Asset Based Community Development model
with CoGTA



Restructuring of Street Vendors at AFRIT

Capital City going Green



Meeting with the Mayor

- Importance of alternative energy solutions
- Recycling strategy
- Water reticulation
- Landscaping.

CitiExec

Mayoral Team plus Captains of Industry: 5 April 2024

- MMC for Infrastructure
- MMC for Safety & Security

Building-up towards showcasing achievements at the CCBC Gala – November 2024.



The Capital City, gateway to Africa

CCBC PRESTIGE GALA DINNER

18:30 - WED 8 NOVEMBER 2023



CAPITAL CITY BUSINESS CHAMBER



Black Tie Affair

Speakers



Keynote: Prof Bonang Mohale



Reuben Olifant: CCBC Chairman

Positioning Our Industries



**Manufacturing: Coca Cola Beverages South
Africa: Mr Gcina Hlabisa**



**Automotive: Nissan South Africa:
Miss Chantel Nkosi**

Positioning Our Industries

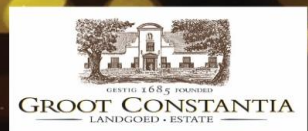


**Agro Processing: National Brands Ltd:
Mr Frikkie van Niekerk**



**Property Development and Infrastructure: Co-partners
Abland (Pty) Ltd: Hendrik van Zyl
VDT Attorneys Inc: Barbara Coetzee**





Thank you to our Partners.